



**REGIONAL SPECIALISED METEOROLOGICAL CENTRE-TROPICAL CYCLONES, NEW DELHI**

**TROPICAL CYCLONE ADVISORY BULLETIN NO. 38**

**FROM: RSMC –TROPICAL CYCLONES, NEW DELHI**

**TO: STORM WARNING CENTRE, NAYPYI TAW (MYANMAR)  
STORM WARNING CENTRE, BANGKOK (THAILAND)  
STORM WARNING CENTRE, COLOMBO (SRILANKA)  
STORM WARNING CENTRE, DHAKA (BANGLADESH)  
STORM WARNING CENTRE, KARACHI (PAKISTAN)  
METEOROLOGICAL OFFICE, MALE (MALDIVES)  
OMAN METEOROLOGICAL DEPARTMENT, MUSCAT (THROUGH RTH JEDDAH)  
YEMEN METEOROLOGICAL SERVICES, REPUBLIC OF YEMEN (THROUGH RTH JEDDAH)  
NATIONAL CENTRE FOR METEOROLOGY, UAE (THROUGH RTH JEDDAH)  
PRESIDENCY OF METEOROLOGY AND ENVIRONMENT, SAUDI ARABIA (THROUGH RTH JEDDAH)  
IRAN METEOROLOGICAL ORGANISATION, (THROUGH RTH JEDDAH)  
QATAR METEOROLOGICAL DEPARTMENT (THROUGH RTH JEDDAH)**

**TROPICAL CYCLONE ADVISORY NO. 38 FOR NORTH INDIAN OCEAN (THE BAY OF BENGAL AND ARABIAN SEA) VALID FOR NEXT 120 HOURS ISSUED AT 0700 UTC OF 21.05.2020 BASED ON 0300 UTC OF 21.05.2020.**

**SUB: CYCLONIC STORM ‘AMPHAN’ (PRONOUNCED AS UM-PUN) LAY OVER BANGLADESH**

THE SUPER CYCLONIC STORM ‘AMPHAN’ (PRONOUNCED AS **UM-PUN**) MOVED NORTH-NORTHEASTWARDS WITH A SPEED OF 10 KMPH DURING PAST 06 HOURS AS A **CYCLONIC STORM** AND LAY CENTERED AT 0830 HRS IST OF TODAY, THE 21<sup>ST</sup> MAY 2020 OVER **BANGLADESH** NEAR LAT. 24.7°N AND LONG. 89.5°E ABOUT 270 KM NORTH-NORTHEAST OF KOLKATA( 42807), 150 KM SOUTH OF DHUBRI (42404) AND 110 KM SOUTH-SOUTHEAST OF RANGPUR (41984).**IT IS VERY LIKELY TO CONTINUE TO MOVE NORTH-NORTHEASTWARDS AND WEAKEN FURTHER INTO A DEEP DEPRESSION DURING NEXT 03 HOURS AND INTO A DEPRESSION DURING SUBSEQUENT 06 HOURS.**

FORECAST TRACK AND INTENSITY ARE GIVEN IN THE FOLLOWING TABLE:

DATE/TIME(UTC)	POSITION (LAT. °N/ LONG. °E)	MAXIMUM SUSTAINED SURFACE WIND SPEED (KMPH)	CATEGORY OF CYCLONIC DISTURBANCE
21.05.20/0300	24.7/89.5	60-70 GUSTING TO 80	CYCLONIC STORM
21.05.20/0600	25.3/89.8	50-60 GUSTING TO 70	DEEP DEPRESSION
21.05.20/1200	26.5/90.5	30-40 GUSTING TO 50	DEPRESSION

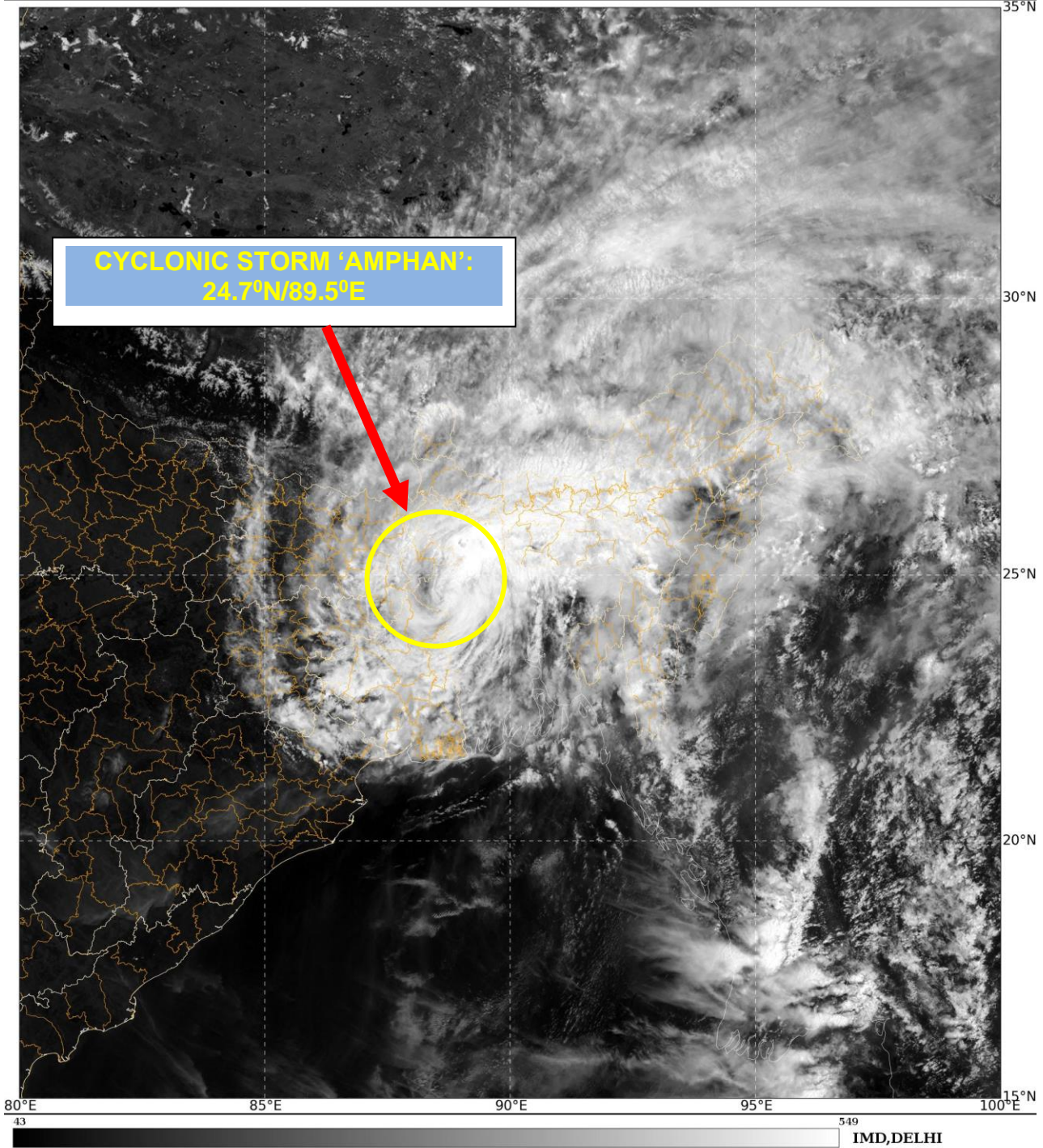
**REMARKS :**

AS PER INSAT-3D SATELLITE IMAGERY BASED ON 0300 UTC OF 21<sup>TH</sup> MAY SHOWS THE VORTEX LIES OVER THE LAND IN AREAS OF BANGALDESH. CENTRE NOT CLEARLY VISIBLE IN SATELLITE IMAGERY. HIGHER CLOUDS HAVE SHEARED AWAY TOWARDS NORTH-EAST FROM THE SYSTEM CENTRE. ASSOCIATED BROKEN LOW/MEDIUM CLOUDS WITH EMBEDDED INTENSE TO VERY INTENSE CONVECTION OVER BANGLADESH AND WEST ASSAM MEGHALAYA. MINIMUM CLOUD TOP TEMPERATURE -83 DEG C. THE ESTIMATED MAXIMUM SUSTAINED WIND SPEED IS 35KNOTS GUSTING TO 45 KNOTS. THE ESTIMATED CENTRAL PRESSURE IS **988** HPA.

**RK JENAMANI  
SCIENTIST-F, RSMC, NEW DELHI**

**PROBABILITY OF CYCLOGENESIS (FORMATION OF DEPRESSION)**

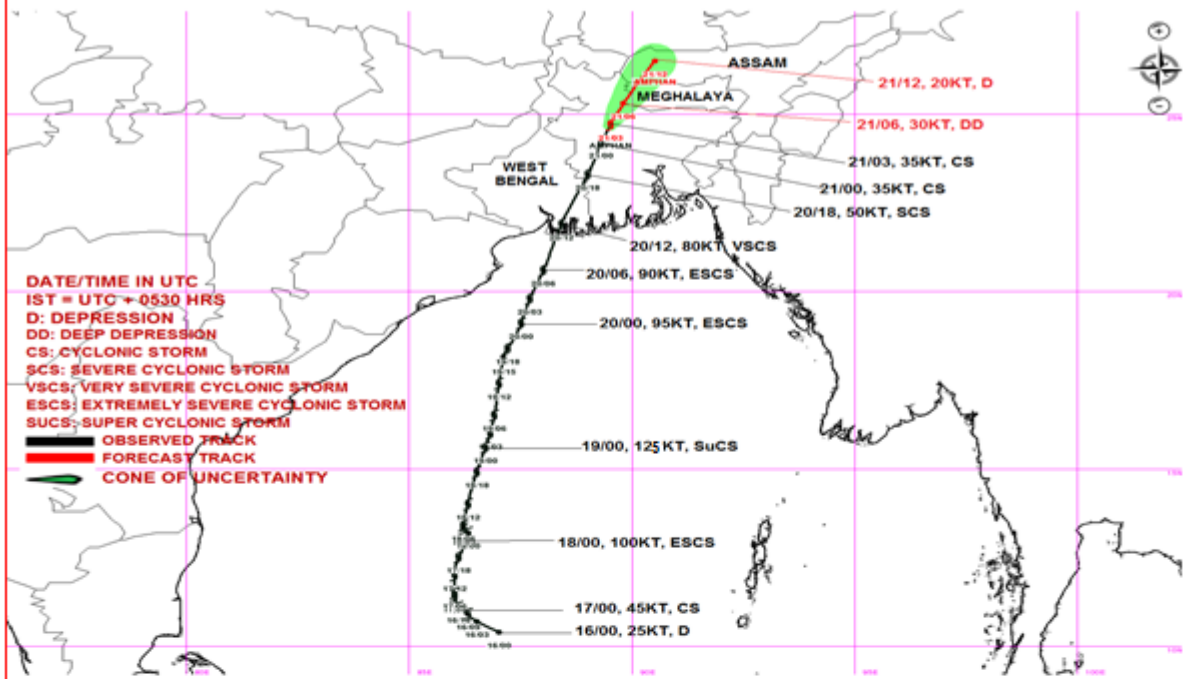
**NIL: 0%, LOW: 1-25%, FAIR: 26-50%, MODERATE: 51-75% AND HIGH: 76-100%**



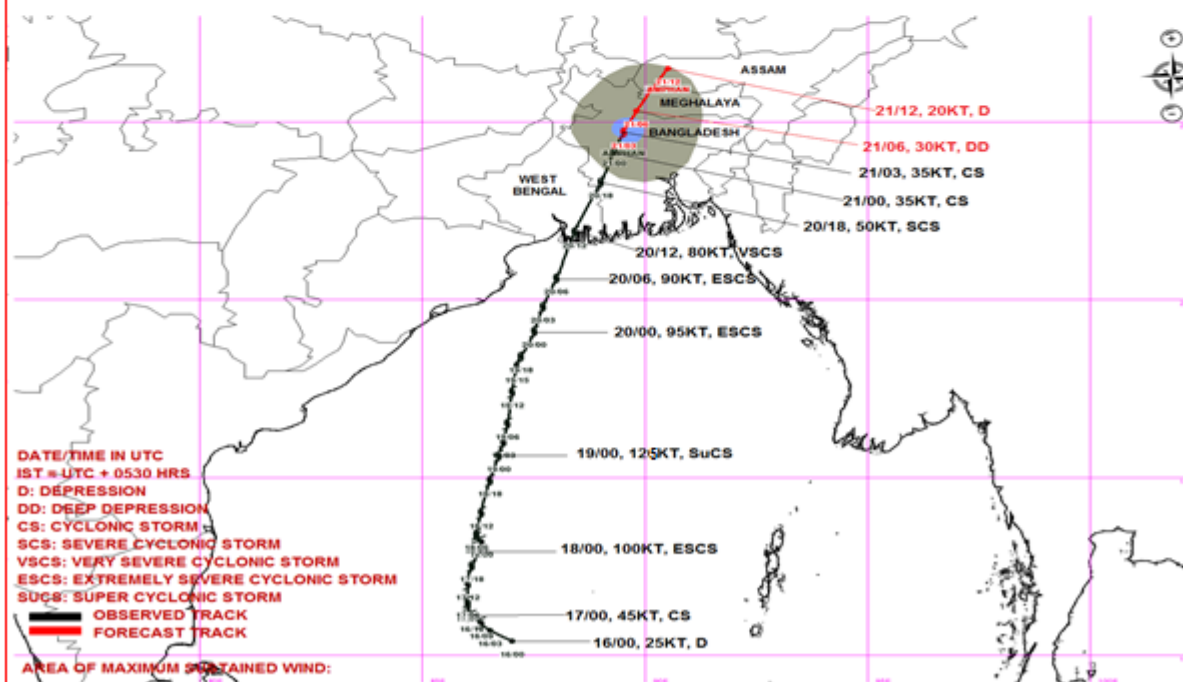
**Legend: WCB – Westcentral Bay of Bengal  
NWB – Northwest Bay of Bengal**

**PROBABILITY OF CYCLOGENESIS (FORMATION OF DEPRESSION)  
NIL: 0%, LOW: 1-25%, FAIR: 26-50%, MODERATE: 51-75% AND HIGH: 76-100%**

**OBSERVED & FORECAST TRACK OF SUPER CYCLONIC STORM 'AMPHAN' BASED ON 0300 UTC OF 21<sup>ST</sup> MAY, 2020**



**OBSERVED & FORECAST TRACK AND WIND DISTRIBUTION OF SUPER CYCLONIC STORM 'AMPHAN' BASED ON 0300 UTC OF 21<sup>ST</sup> MAY, 2020**



MSW(knot)/kmph)	Impact	Action
28-33 / (52-61 )	Very rough seas.	Total suspension of fishing operations
34-40 / (62-74)	High to very high seas	Total suspension of fishing operations

**PROBABILITY OF CYCLOGENESIS (FORMATION OF DEPRESSION)**

**NIL: 0%, LOW: 1-25%, FAIR: 26-50%, MODERATE: 51-75% AND HIGH: 76-100%**